



NATIONAL BUREAU OF STATISTICS

The background of the report is a dark, semi-transparent image of a car accident. A silver sedan is shown from the side, with its front end heavily damaged and crumpled. The car is on a road with trees in the background. The overall tone is somber and serious.

Road Transport Data

Q1 2026

Report Date: May 2026

Data Source: National Bureau of Statistics (NBS)/Federal Road Safety Corps (FRSC)



CONTENTS

Methodology	3
Key Highlights	4
Infographics	5
Contact	15



METHODOLOGY

Data is provided by the Federal Road Safety Corps (FRSC), and reported by the National Bureau of Statistics (NBS)

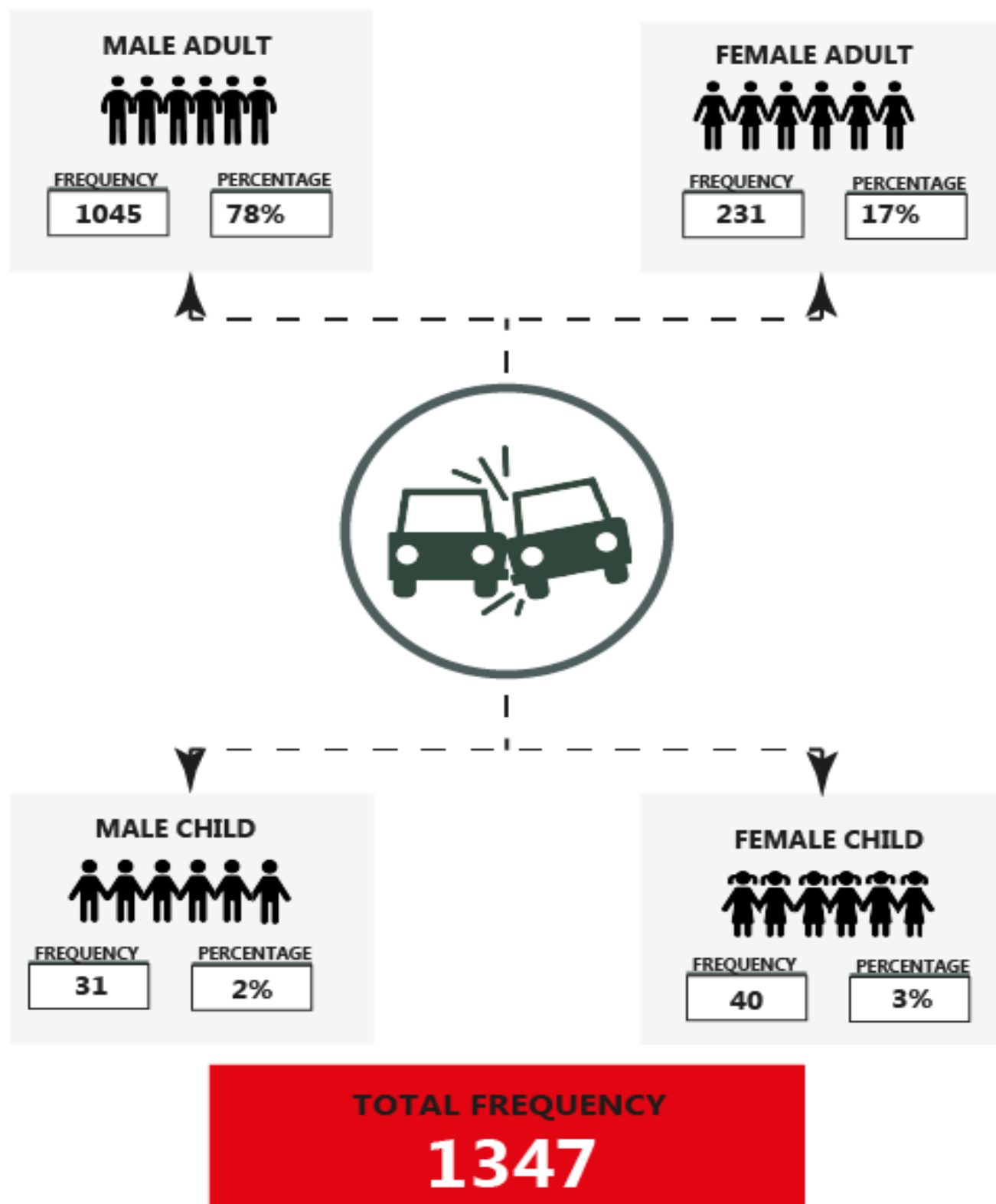
KEY HIGHLIGHTS

- In Q1 2026, a total of 2,720 road traffic crashes were recorded. This represents a decrease of 0.40% compared to the 2,731 crashes recorded in Q4 2025, and an increase of 2.64% relative to the 2,650 crashes recorded in the corresponding period of 2025 (Q1 2025).
- Disaggregation by severity shows that serious crashes accounted for the highest proportion with 1,761 cases, followed by fatal crashes with 714 cases, while minor crashes recorded the least with 245 cases.
- Analysis of fatalities by gender indicates that males accounted for the majority of deaths. A total of 1,076 males were killed, representing 79.88% of total fatalities, while 271 females were killed, accounting for 20.12%.
- During the period under review, 6,547 males were injured, accounting for 76.35% of the total injured persons, while 2,028 females were injured, representing 23.65%.
- The number of vehicles involved in road traffic crashes stood at 4,078 in Q1 2026, indicating an increase of 0.47% compared to the 4,059 vehicles recorded in Q4 2025.
- In terms of zonal distribution, the North-Central recorded the highest number of crashes with 752 cases, followed by the South-West with 699 cases, while the South-South recorded the least with 137 cases.
- With respect to casualties, the North-West zone recorded the highest number with 2,675 casualties, followed by the North-Central with 2,544 casualties, while the South-South recorded the least with 402 casualties.

NB: See attached Excel file for details

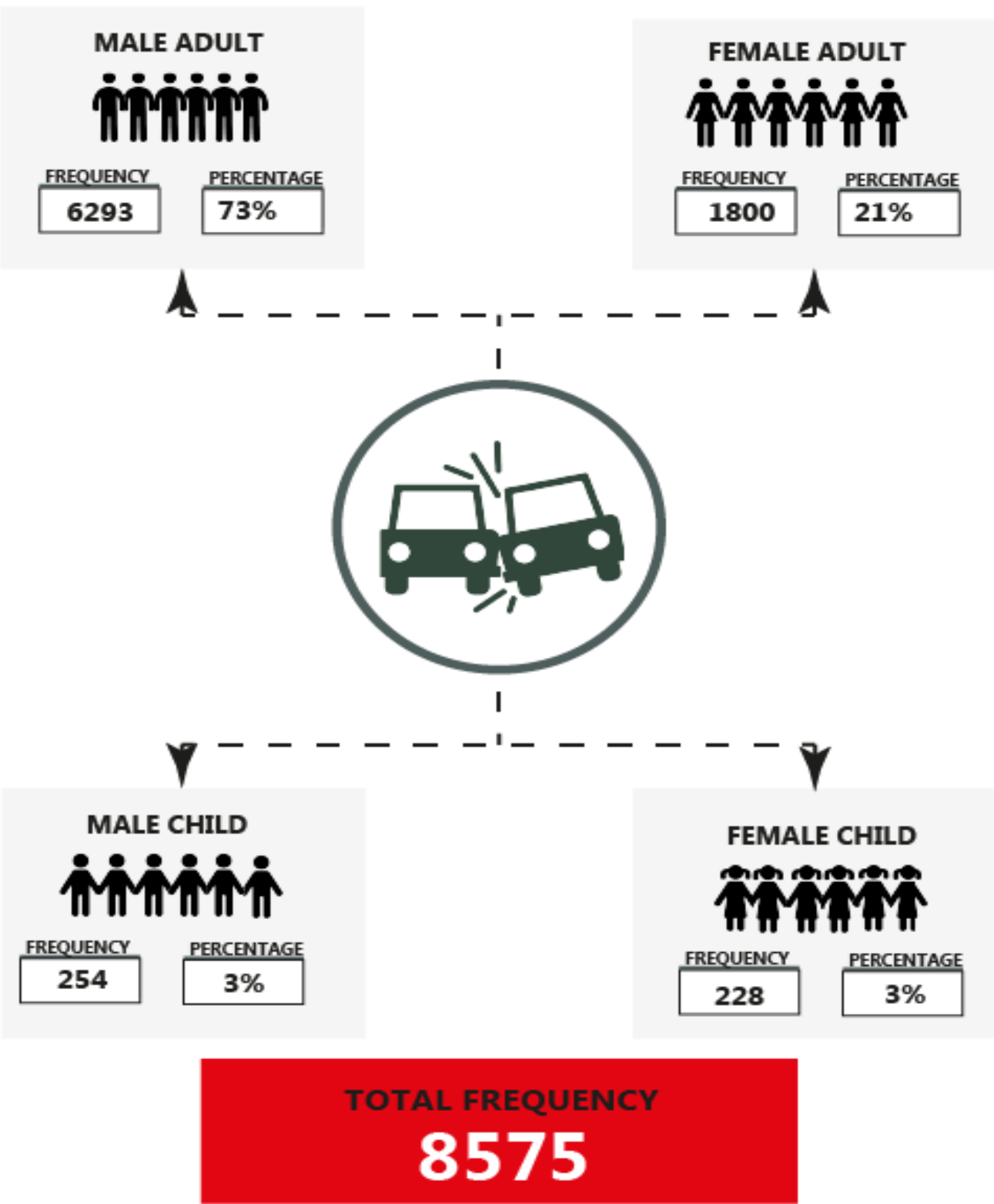
ROAD TRANSPORT DATA - Q1 2026

Sex Distribution of Persons Killed
In Road Traffic Crashes



ROAD TRANSPORT DATA - Q1 2026

Sex Distribution of Persons Injured
In Road Traffic Crashes



ROAD TRANSPORT DATA - Q1 2026

Category Of Vehicles Involved
In Road Traffic Crashes



FREQUENCY

PERCENTAGE (%)

Government



60

1.47%

Private



1089

26.70%

Commercial



2929

71.82%

Diplomat



0

0.00%

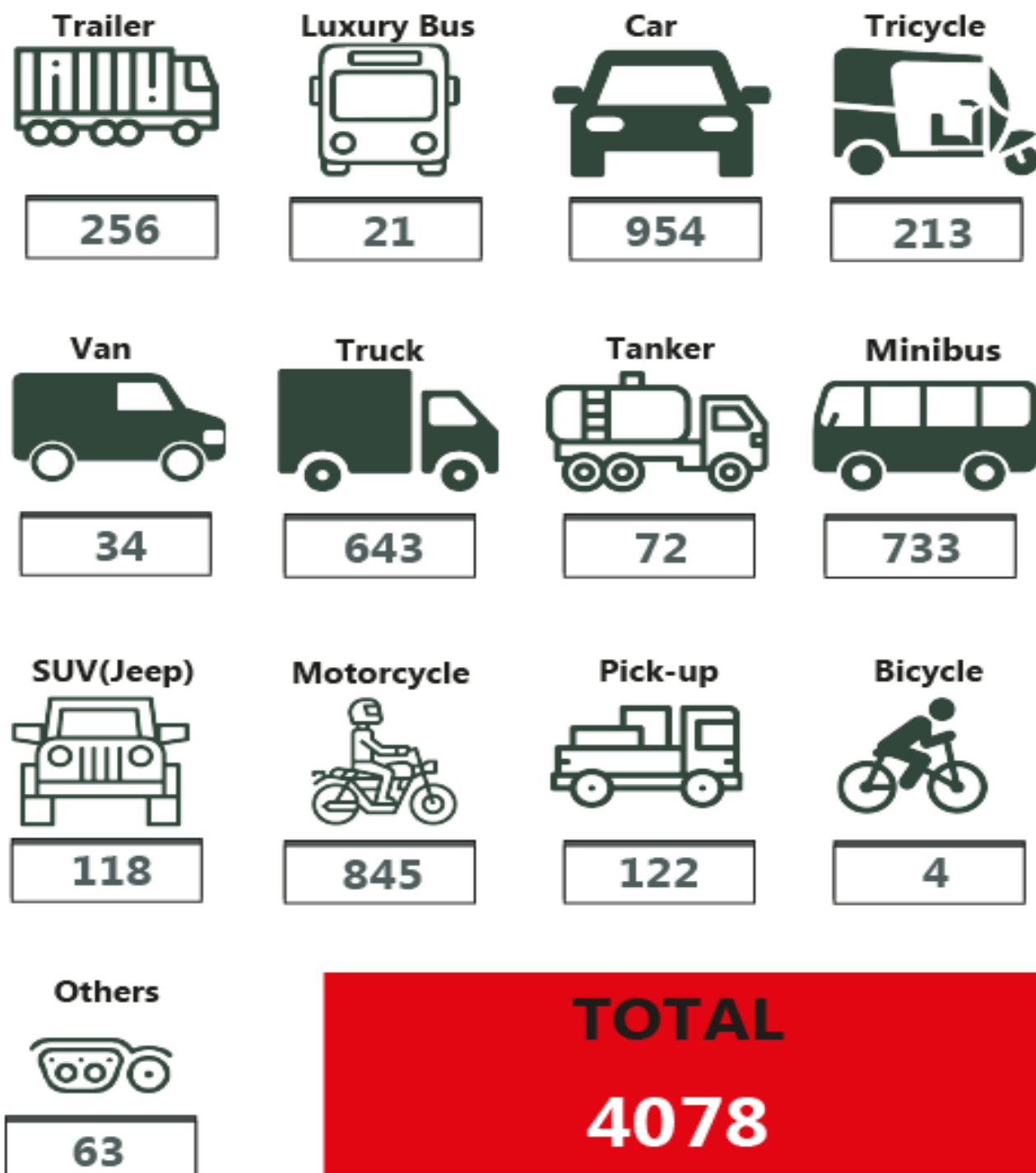
TOTAL

4078

100.00%

ROAD TRANSPORT DATA - Q1 2026

Number Of Vehicles Involved
In Road Traffic Crashes

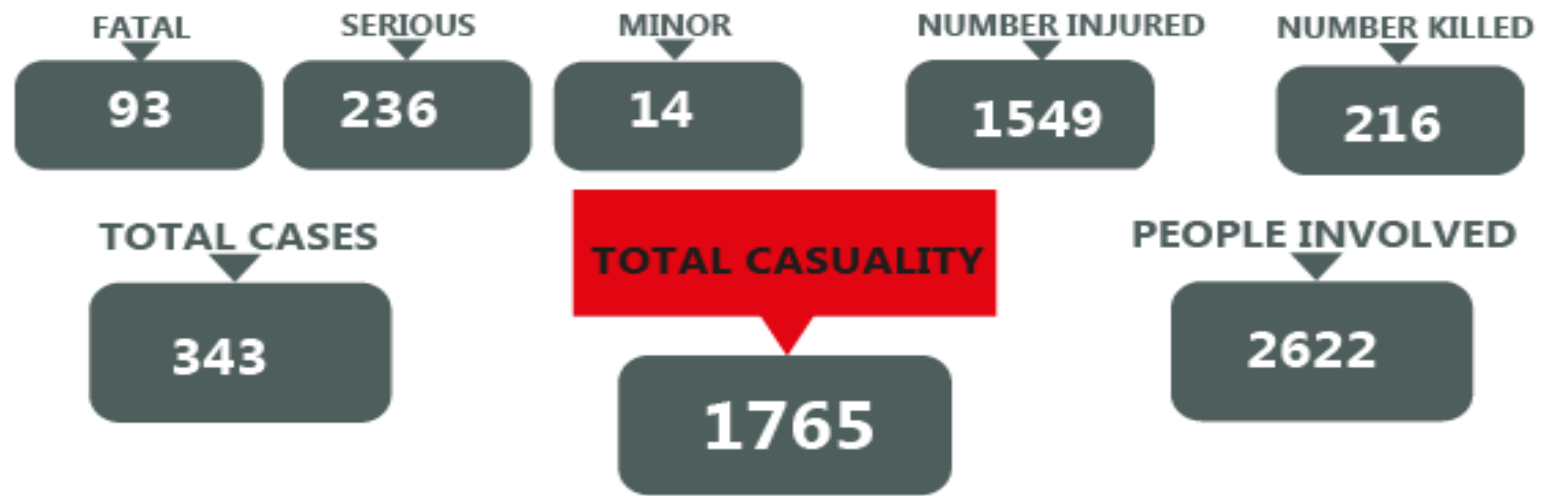


ROAD TRANSPORT DATA - Q1 2026

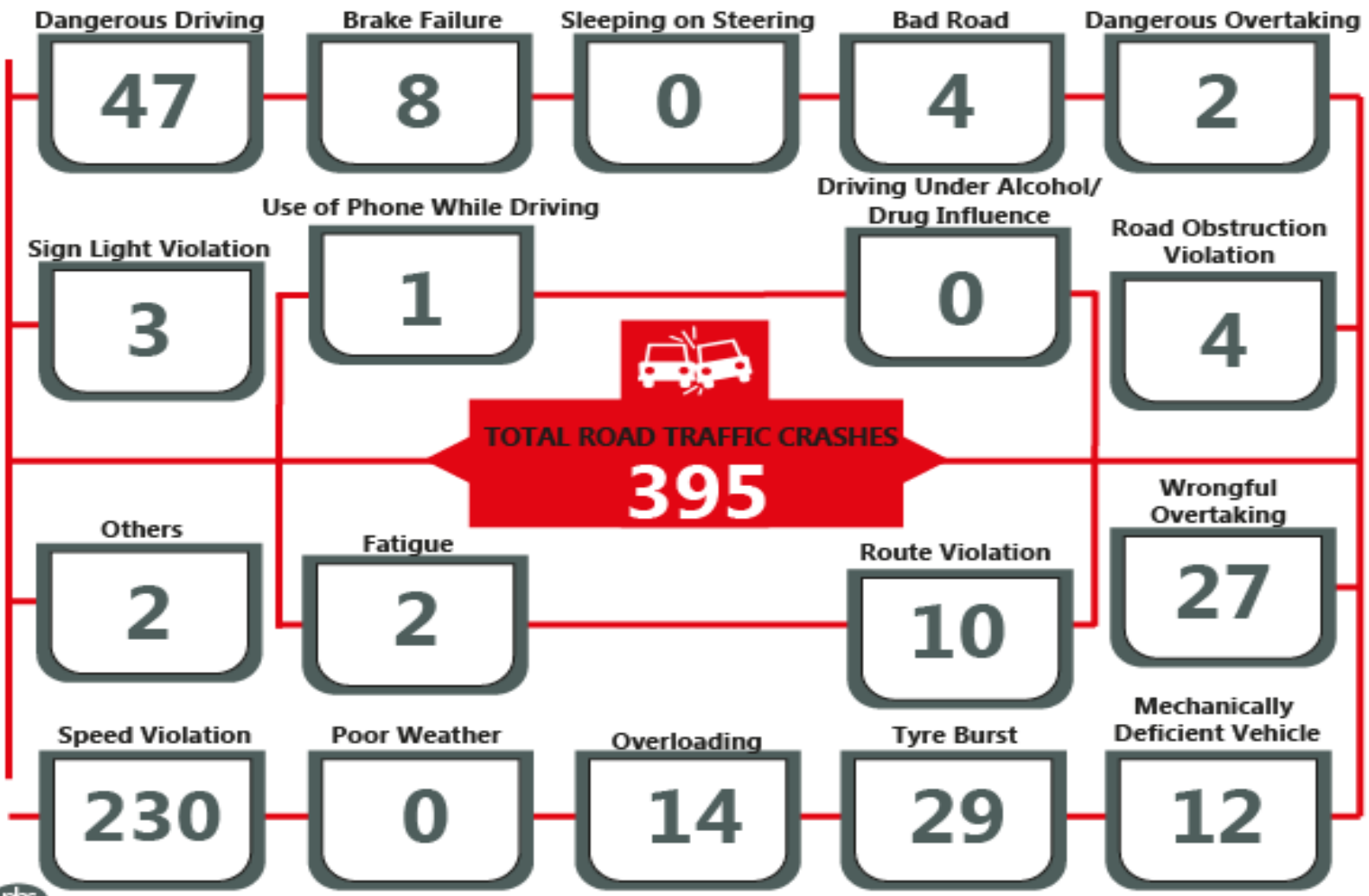
North East



ROAD TRAFFIC CRASHES Q1 2026



CAUSATIVE FACTORS OF ROAD TRAFFIC CRASHES, Q1 2026

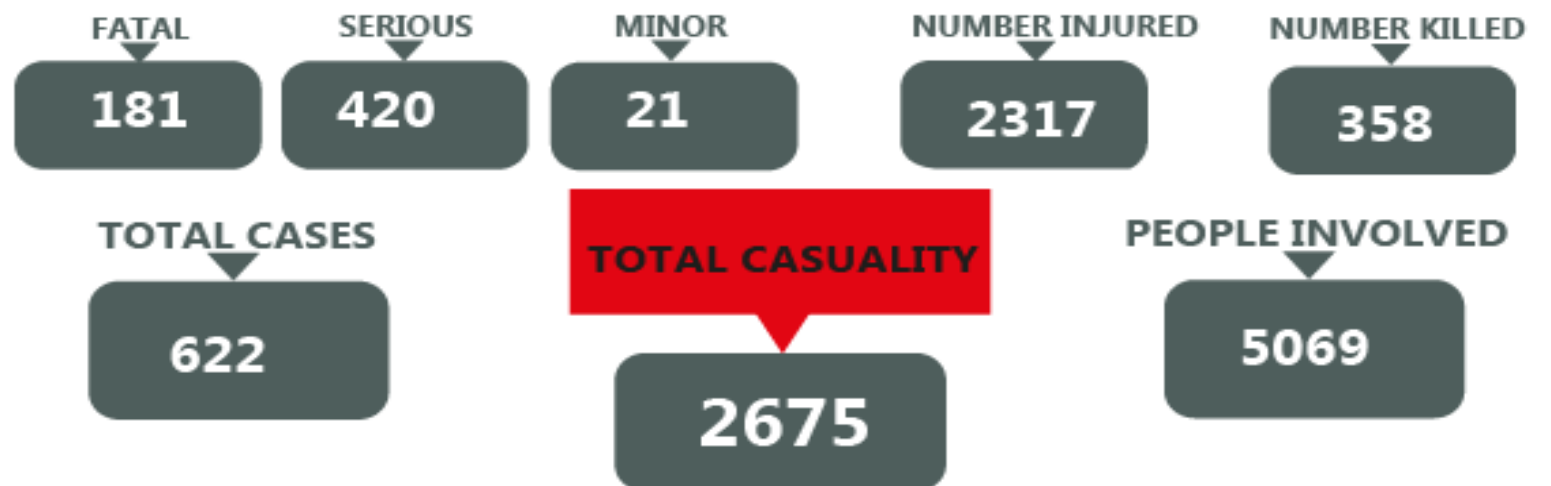


ROAD TRANSPORT DATA - Q1 2026

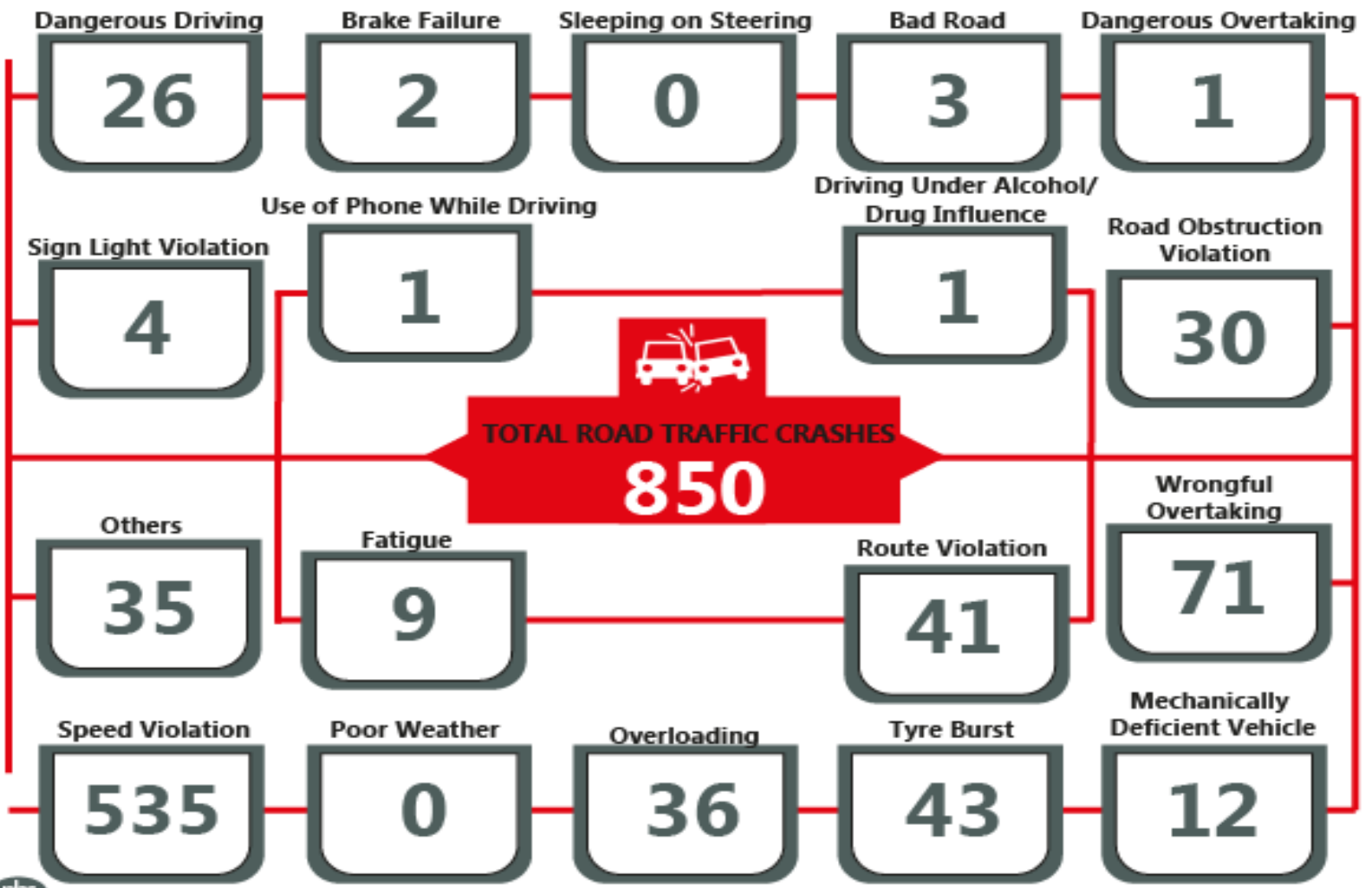
North West



ROAD TRAFFIC CRASHES Q1 2026



CAUSATIVE FACTORS OF ROAD TRAFFIC CRASHES, Q1 2026

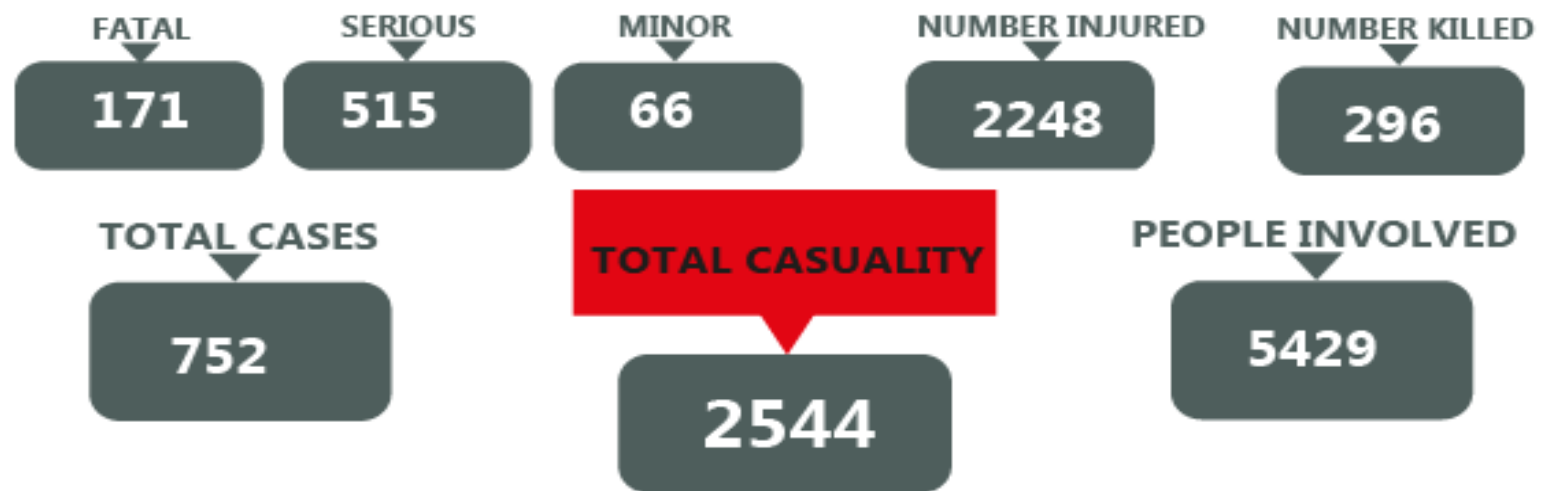


ROAD TRANSPORT DATA - Q1 2026

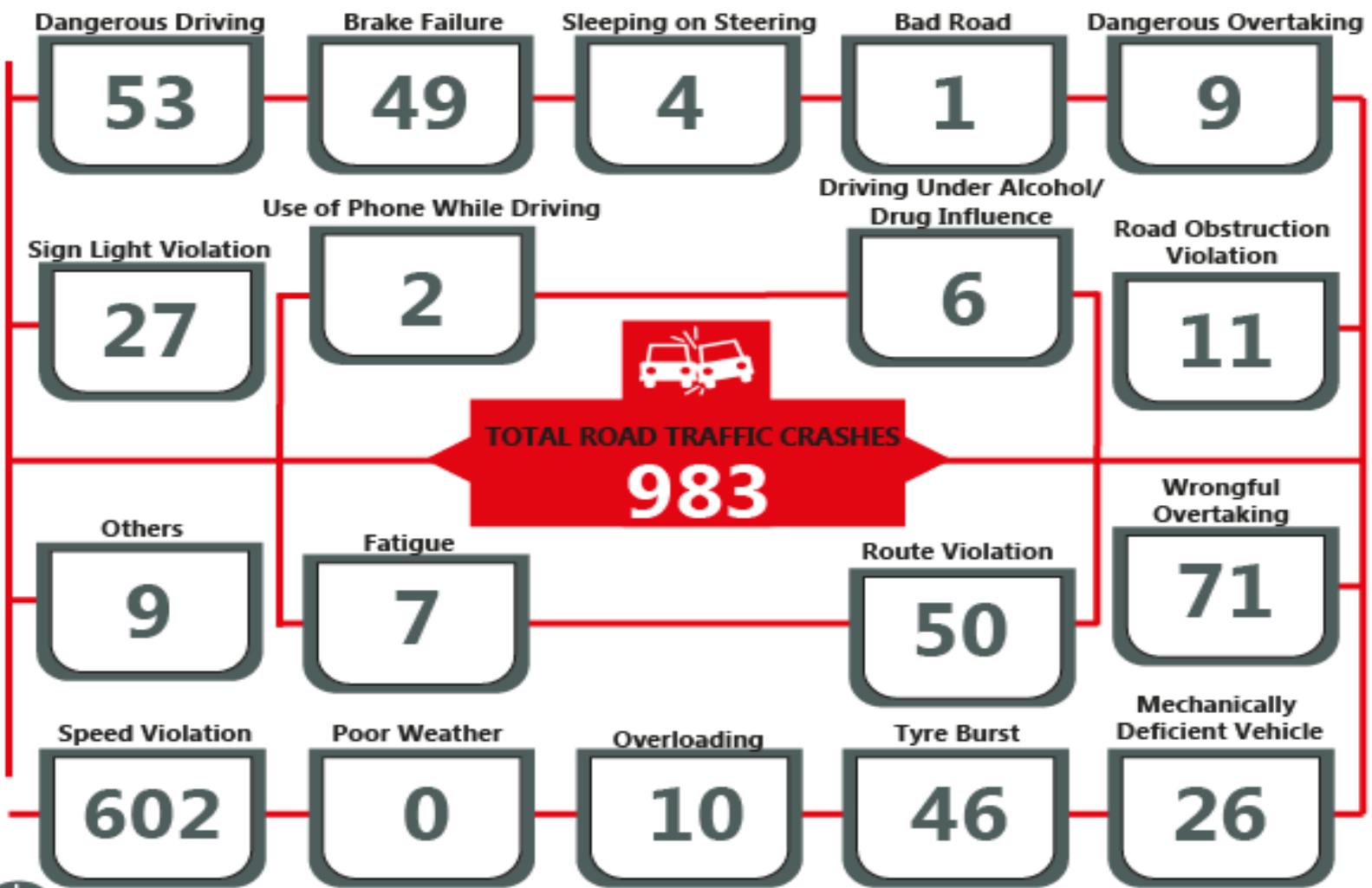
North Central



ROAD TRAFFIC CRASHES Q1 2026



CAUSATIVE FACTORS OF ROAD TRAFFIC CRASHES, Q1 2026

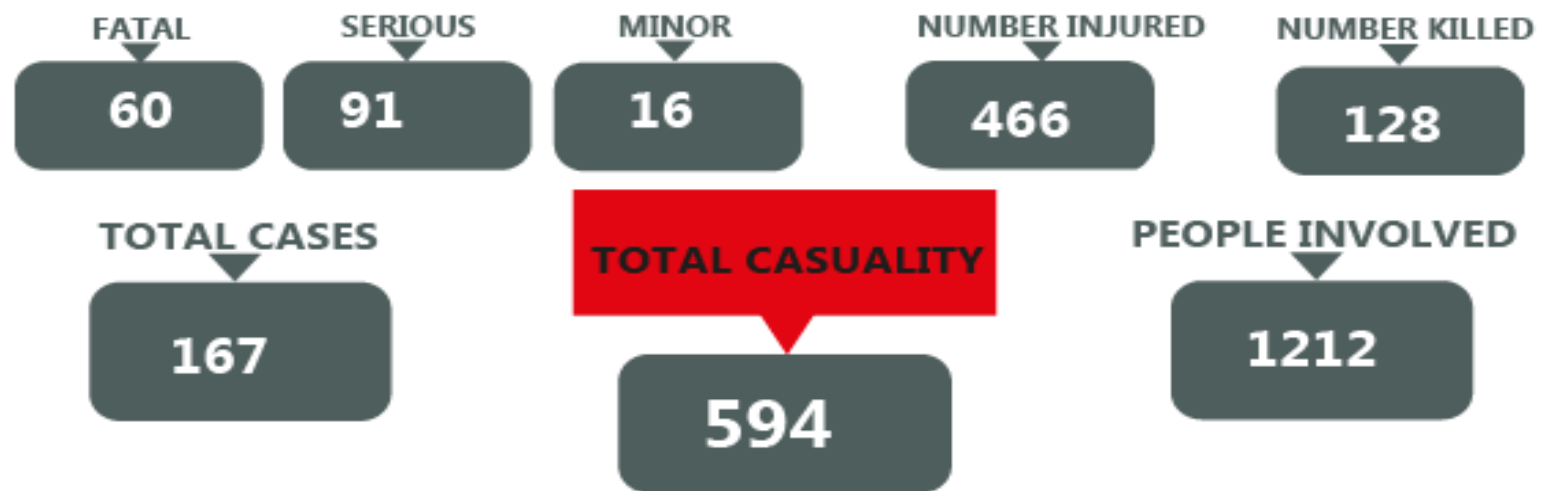


ROAD TRANSPORT DATA - Q1 2026

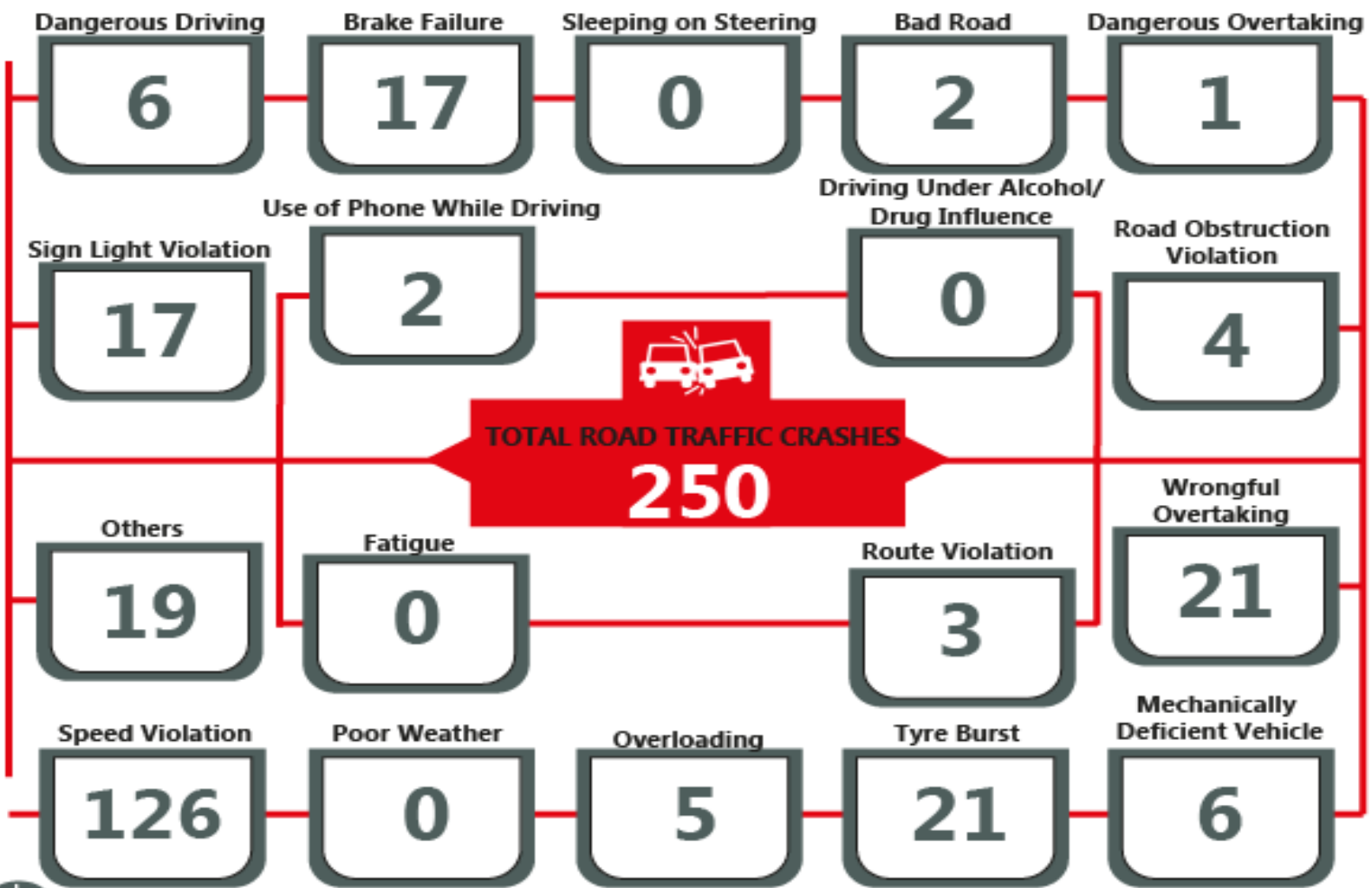
South East



ROAD TRAFFIC CRASHES Q1 2026



CAUSATIVE FACTORS OF ROAD TRAFFIC CRASHES, Q1 2026

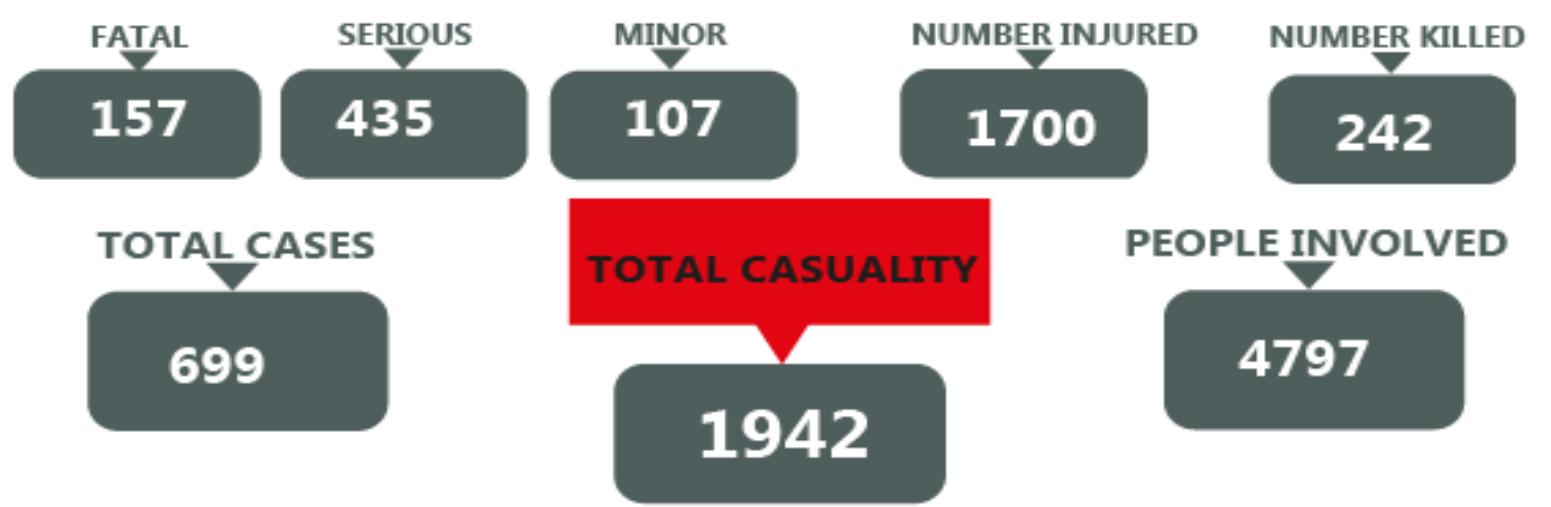


ROAD TRANSPORT DATA - Q1 2026

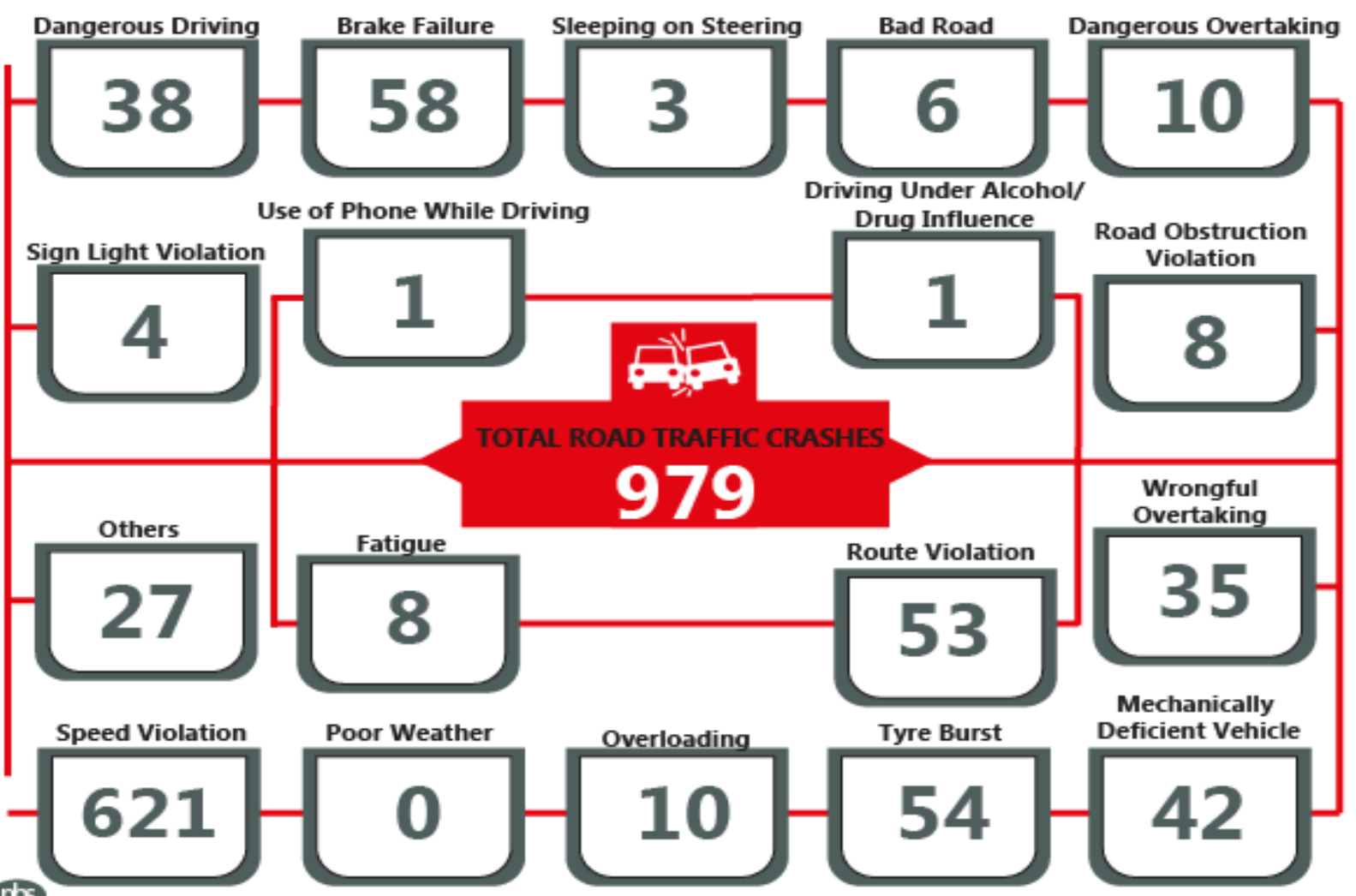
South West



ROAD TRAFFIC CRASHES Q1 2026



CAUSATIVE FACTORS OF ROAD TRAFFIC CRASHES, Q1 2026

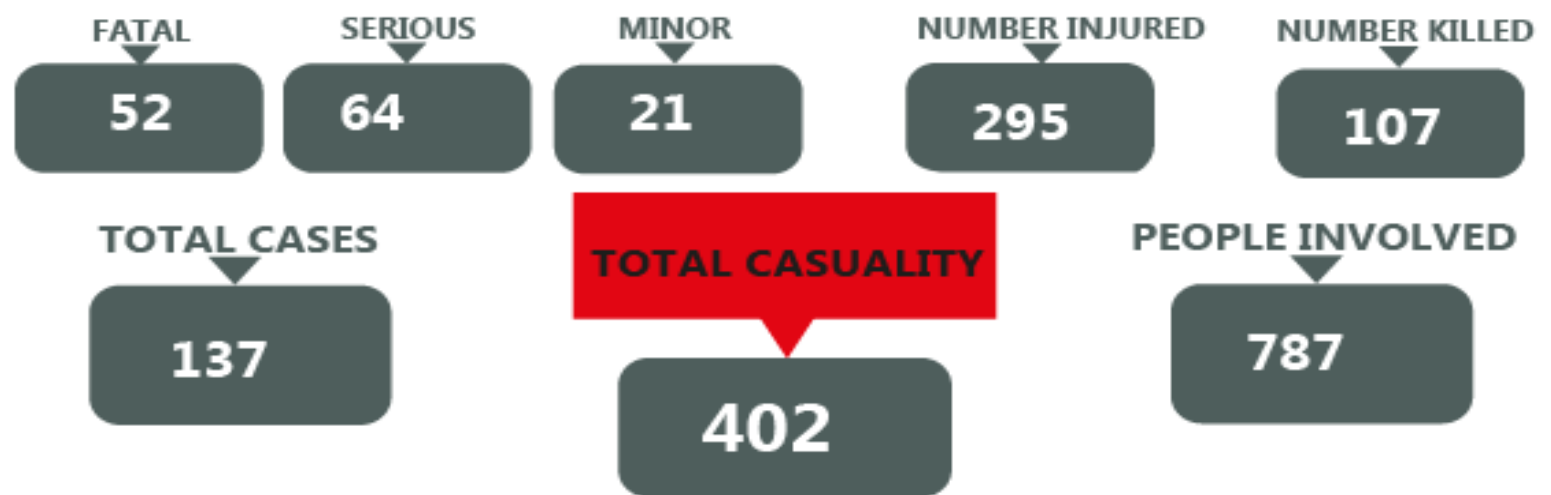


ROAD TRANSPORT DATA - Q1 2026

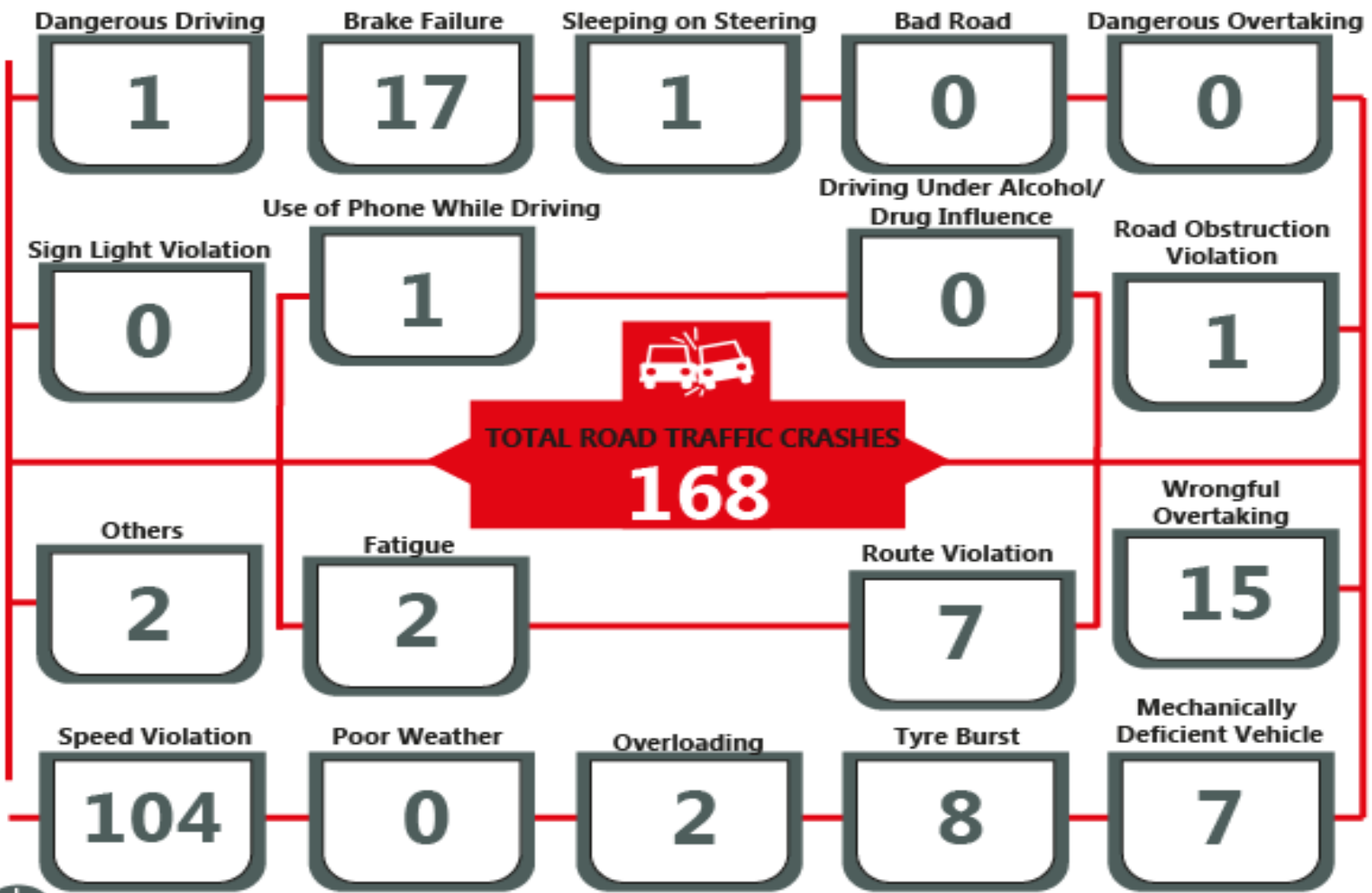
South South



ROAD TRAFFIC CRASHES Q1 2026



CAUSATIVE FACTORS OF ROAD TRAFFIC CRASHES, Q1 2026



CONTACT



National Bureau of Statistics

Head Office
No. 1, Wole Olanipekun Street,
Formerly, Plot 762, Independence Avenue,
Off Constitution Avenue,
CBD, Abuja, F.C.T.

Bonaventure Nwosu

Information Desk
Head, Communication and Public Relations
Department (C&PRD)
Phone +2348033109882
bnwosu@nigerianstat.gov.ng

Moses Mathew

Statistical Information Officer
Department (C&PRD)
Phone +2347069071157
matmoses@nigerianstat.gov.ng



@nbs_nigeria



NBSNIGERIA



Nbs_nigeria

